

 **MISUTONIDA**
italian style **4x4**
accessories



ISUZU D-MAX 2020



30 Min.

Item Code

Codice Articolo

P/480/IX

Référence Article

GB

**STAINLESS STEEL
SIDE STEPS**

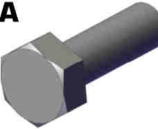


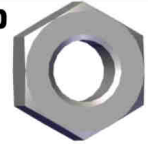
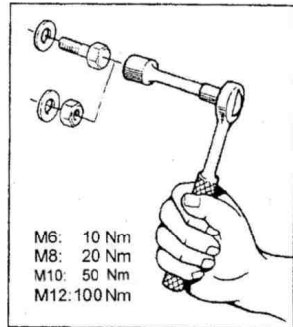

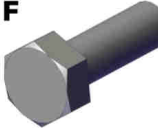

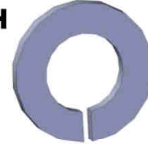



ITA

**PEDANA SOTTOPORTA
IN ACCIAIO INOX**

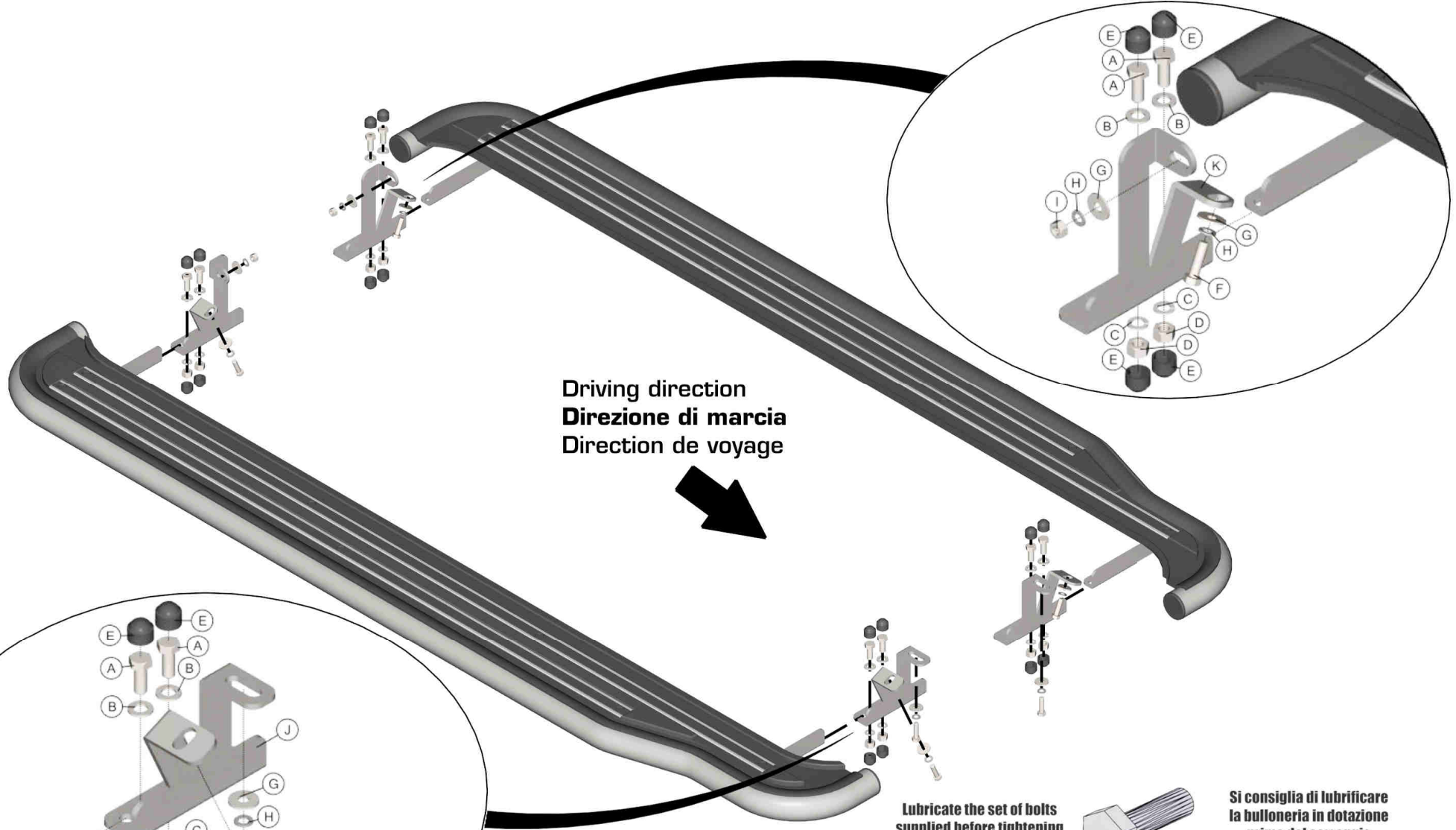
FR

**MERCHEPIEDS
EN ACCIER INOX**

ISUZU D-MAX 2020

| Part List Lista della bulloneria Liste des pièces | | | | | |
|---|--|---|--|---|--|
| A  TE M10X25 X 8 | B  Ø 10 X 8 | C  Ø 10 X 8 | D  M 10 X 8 |  <p>M6: 10 Nm M8: 20 Nm M10: 50 Nm M12: 100 Nm</p> | |
| E  M 10 X 16 | F  TE M8X30 X 6 | G  Ø 8 Big Grandi Grand X 8 | H  Ø 8 X 8 | | |
| I  M 8 X 2 | J  P/480/B X 2 | K  P/480/C X 2 | | | |

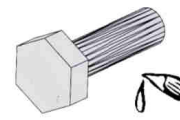
ISUZU D-MAX 2020



Driving direction
Direzione di marcia
Direction de voyage



Lubricate the set of bolts
supplied before tightening
them

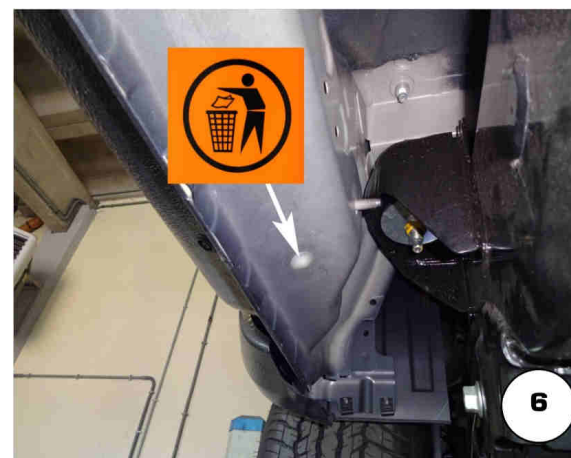
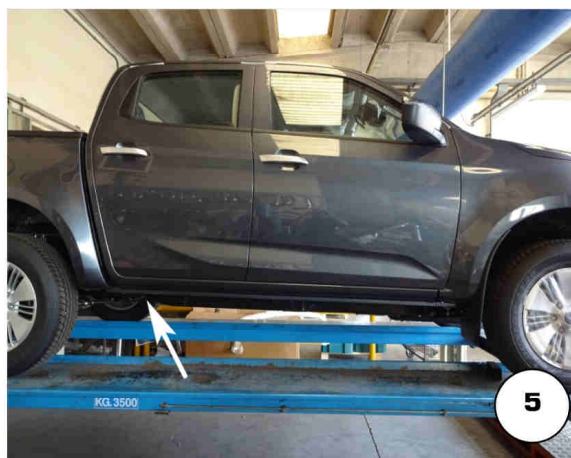
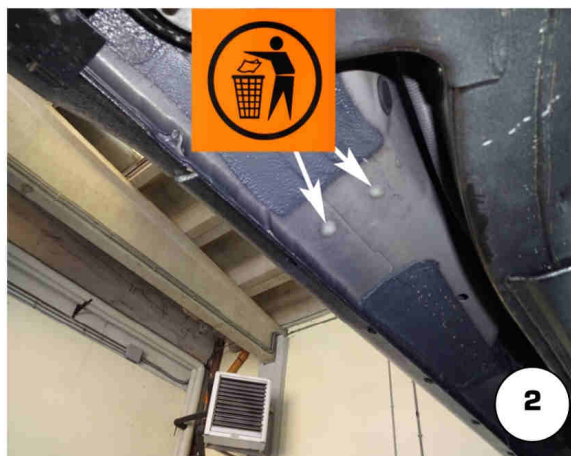
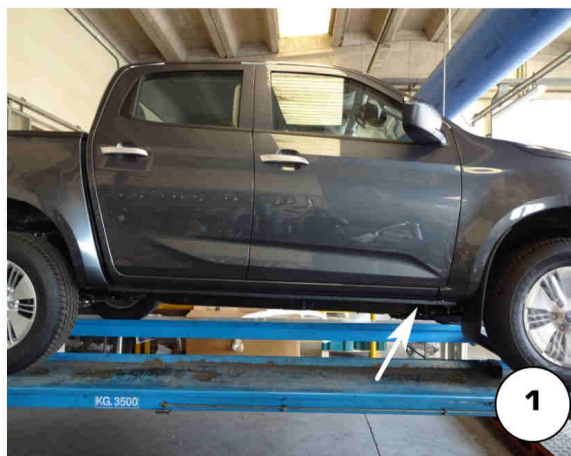


Si consiglia di lubrificare
la bulloneria in dotazione
prima del serraggio

Benetzen Sie die Schrauben
mit Öl, bevor Sie angezogen
werden



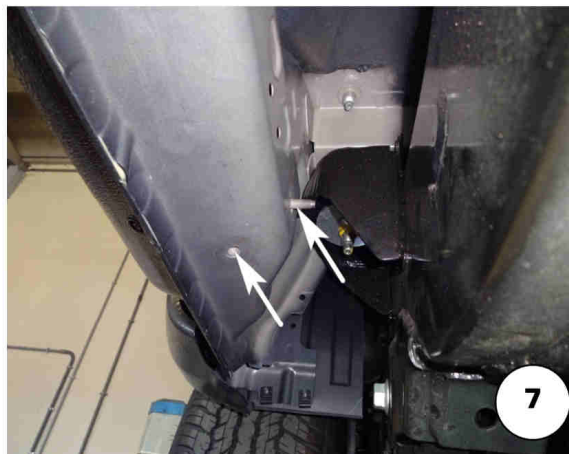
Lubrifier la boulonnerie
avant de la serrer



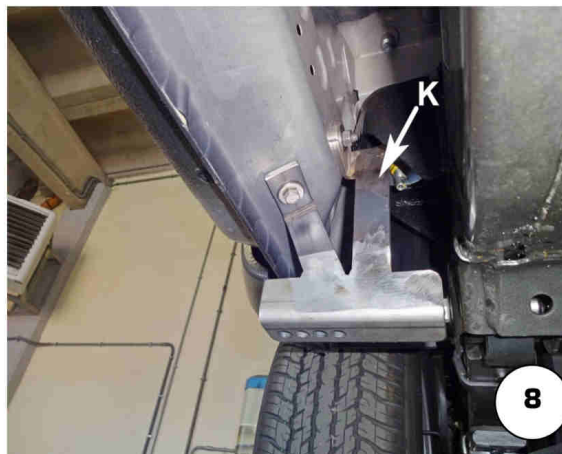
| Date Data Date | Item Code Cod. Articolo Réf. Article | Vehicle model Modello Veicolo Modèle de Voiture |
|----------------------|--|---|
| 20/10/2020 | P/480/IX | ISUZU D-MAX 2020 |

Document checked and approved by
Documento controllato ed approvato da
 Document contrôlé et approuvé par

BOTTA PIETRO



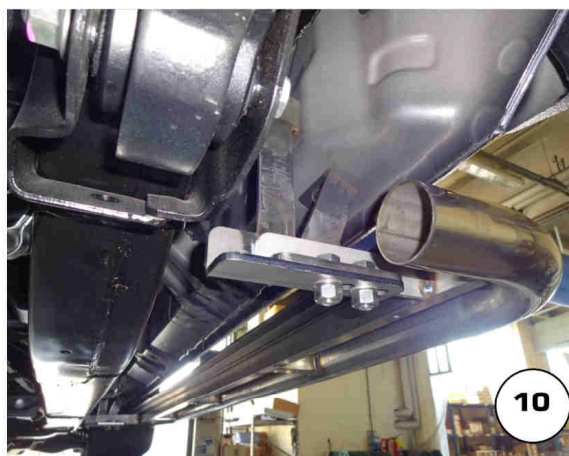
7



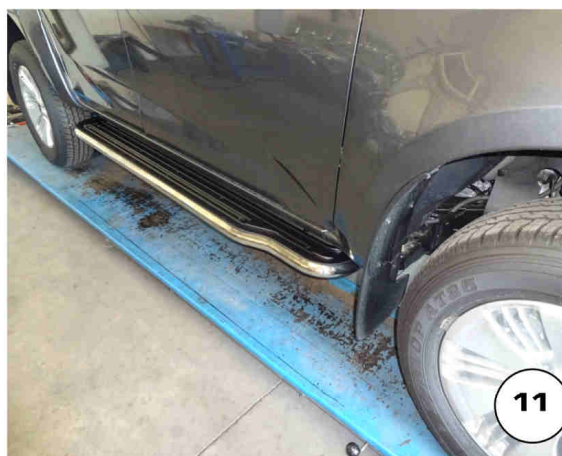
8



9



10



11

| Date Data Date | Item Code Cod. Articolo Réf. Article | Vehicle model Modello Veicolo Modèle de Voiture |
|----------------------|--|---|
| 20/10/2020 | P/480/IX | ISUZU D-MAX 2020 |

Document checked and approved by
 Documento controllato ed approvato da
 Document contrôlé et approuvé par

BOTTA PIETRO