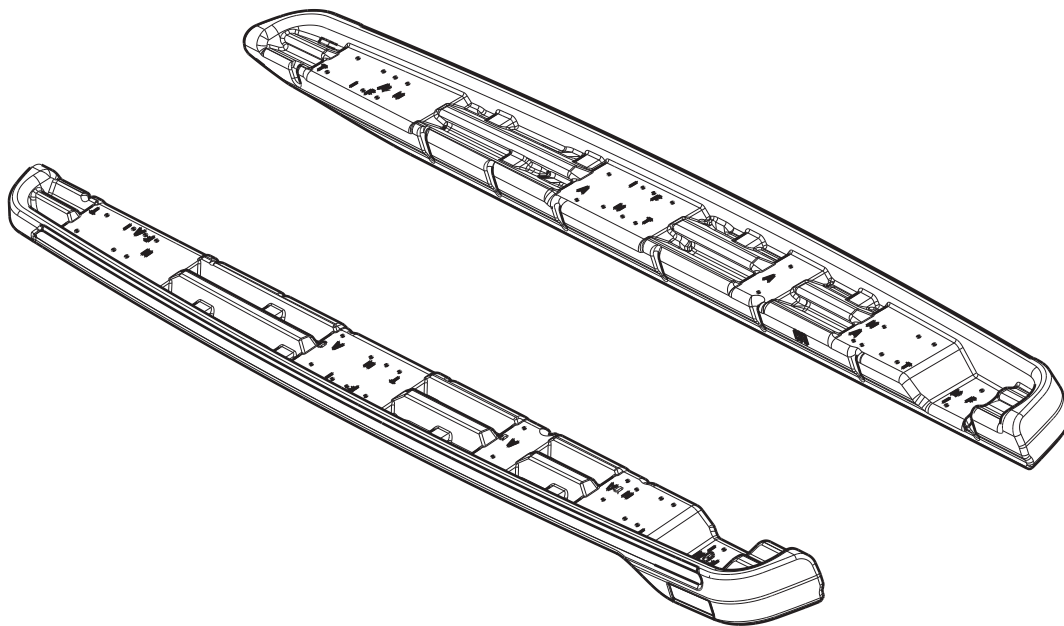
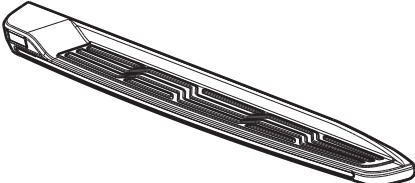
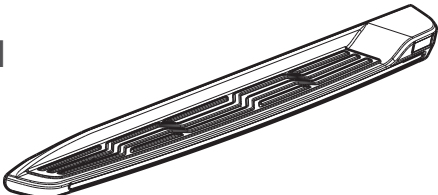
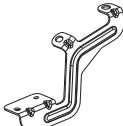
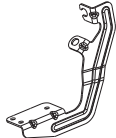

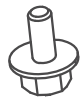
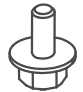




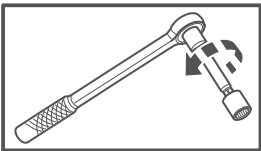
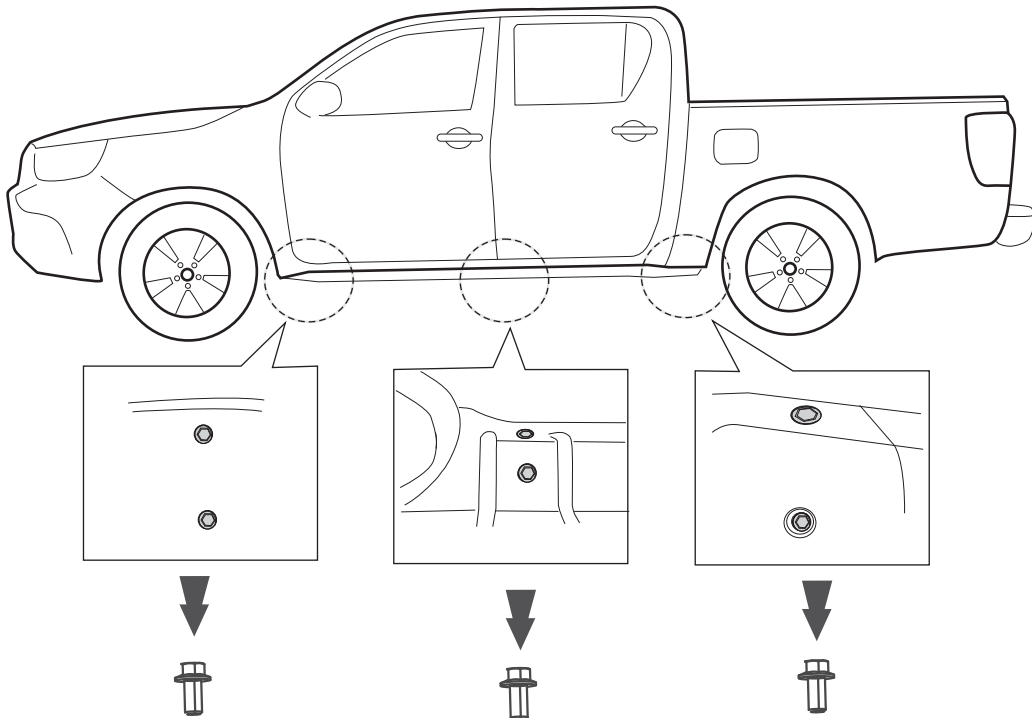
Für :
For : FORD



<p>A RE RH</p>  <p>X1</p>	<p>B LI LH</p>  <p>X1</p>		
<p>C FORNT COMMON LH/RH Vorne Allgemein RE/LI</p>  <p>X2</p>	<p>D MIDDLE COMMON LH/RH Mitte Allgemein RE/LI</p>  <p>X2</p>	<p>E REAR COMMON LH/RH Hinten Allgemein RE/LI</p>  <p>X2</p>	
<p>F M 6</p>  <p>X12</p>	<p>G M 10</p>  <p>X12</p>	<p>J</p>  <p>M 6 (washer) OD 16 mm M 6 (Unterlegscheibe) OD 16 mm</p> <p>X12</p>	<p>J</p>  <p>M 10 (washer) OD 28 mm M 10 (Unterlegscheibe) OD 28 mm</p> <p>X12</p>
<p>AEROKLAS</p>	<p>319138300001</p>	<p>25/06/2018</p>	<p>2/5</p>

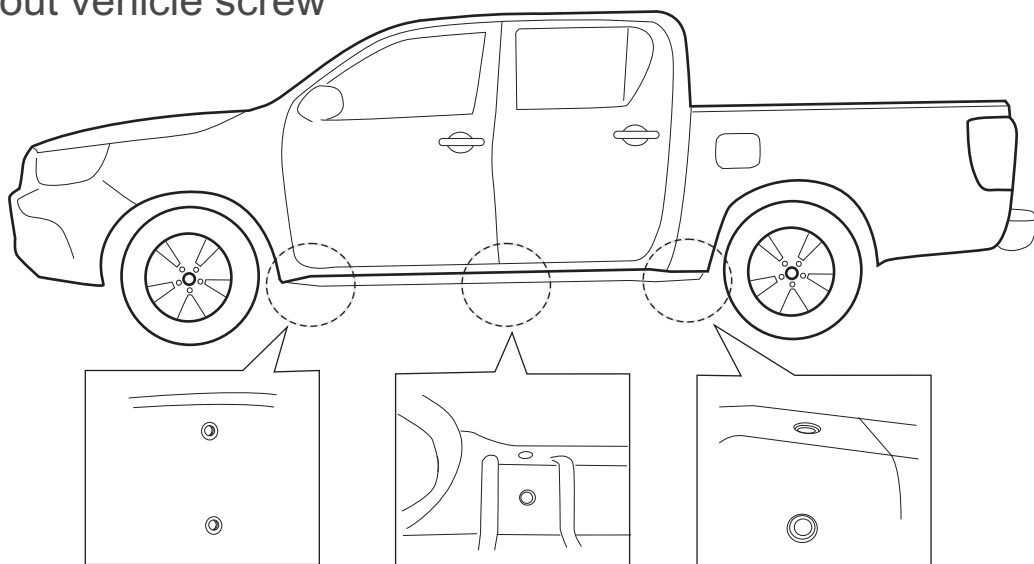
1

Mit Fahrzeugschrauben
with vehicle screw

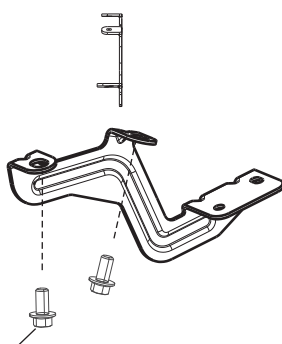
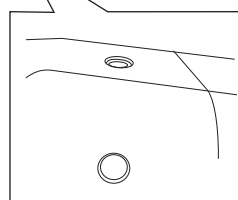
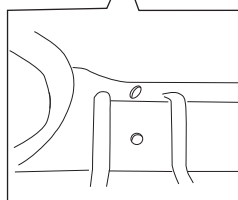
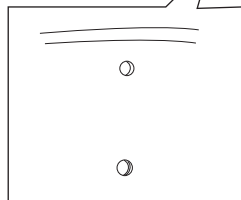
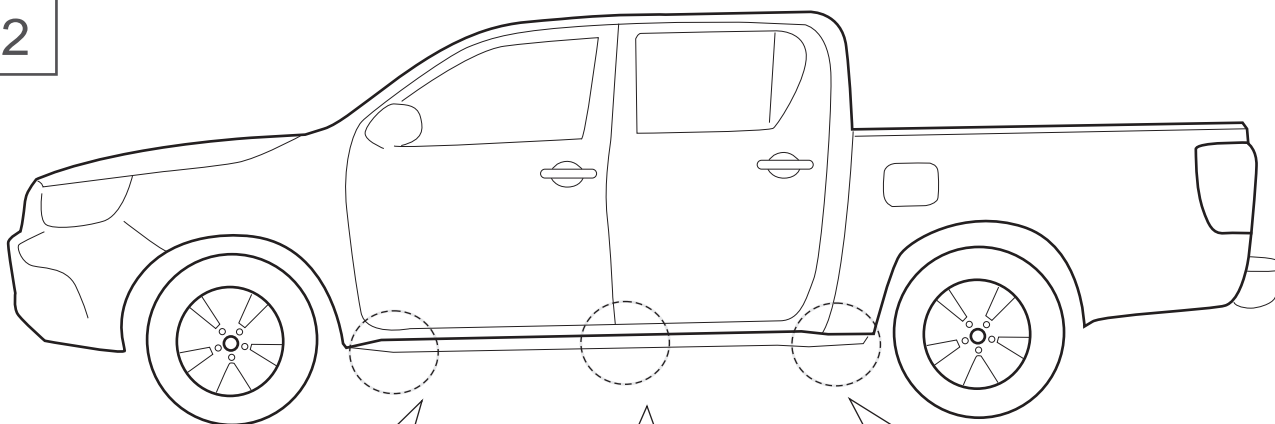


X6
Pro Seite / Per Side

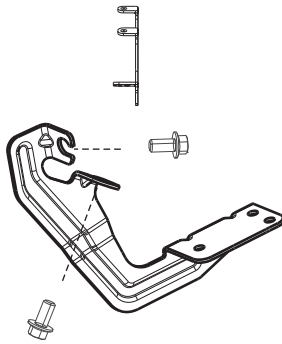
Ohne Fahrzeugschrauben
without vehicle screw



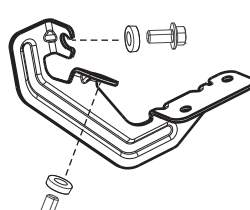
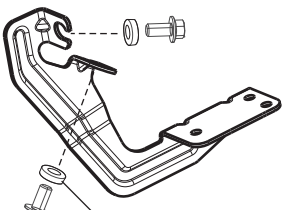
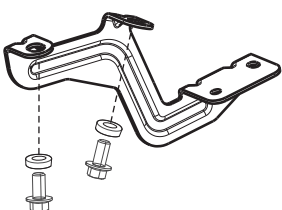
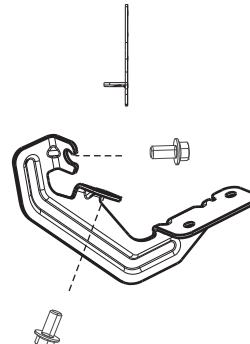
2



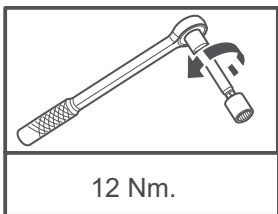
Fahrzeugschrauben
Vehicle screw



Mit Fahrzeugschrauben
With vehicle screw



Unterlegscheibe OD 28 mm x 12 Pcs
Washer OD 28 mm x 12 Pcs (Für RE / LI)
Schraube M10
Screw M10 x 12 Pcs (Für RE / LI)



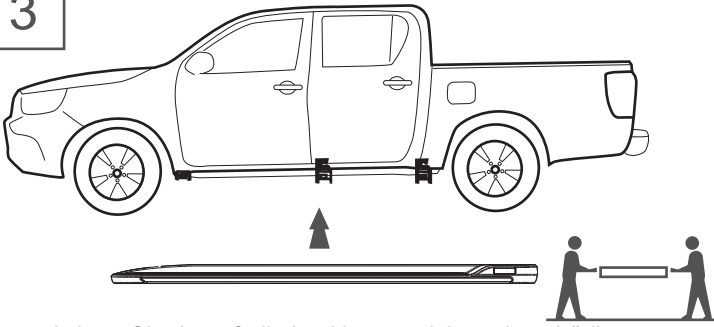
12 Nm.

X6

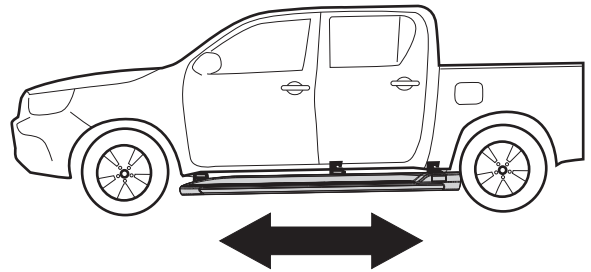
Pro Seite / Per Side

Ohne Fahrzeugschrauben
Without vehicle screw

3



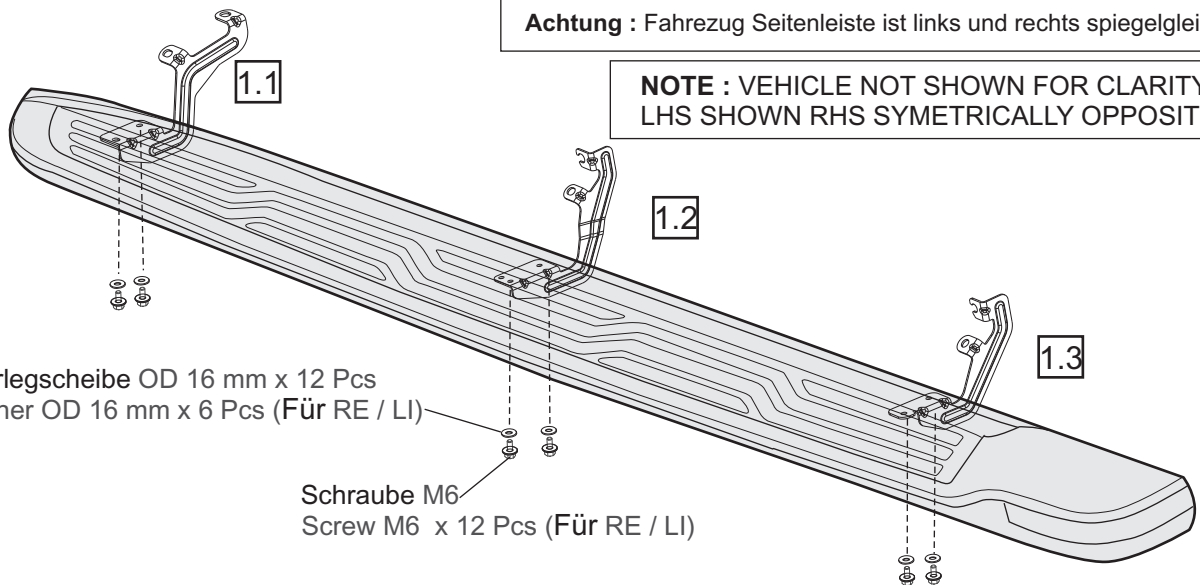
Achten Sie darauf, die Lackierung nicht zu beschädigen
Ziehen Sie die lose Schrauben zwischen den Halterungen
und Fahrzeug für jede Position der Halterung fest
BE CAREFUL NOT TO DAMAGE THE PAINT WORK
TIGHTEN LOOSE SCREW BETWEEN BRACKET
AND VEHICLE FOR EACH POSITION OF BRACKET



Seitenstufe auf Lochposition anpassen
ADJUST SIDE STEP FORD HOLE POSITION

Achtung : Fahrzeug Seitenleiste ist links und rechts spiegelgleich

NOTE : VEHICLE NOT SHOWN FOR CLARITY
LHS SHOWN RHS SYMETRICALLY OPPOSITE

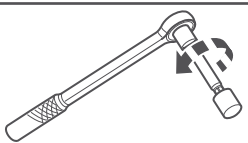


Unterlegscheibe OD 16 mm x 12 Pcs
Washer OD 16 mm x 6 Pcs (Für RE / LI)

Schraube M6
Screw M6 x 12 Pcs (Für RE / LI)

REMARK : 1.) Nach Anpassen der Seitenleiste an den Löchern, die Schrauben
der Klemme und Seitenleiste anziehen
2.) Alle Schrauben anziehen
3.) Film von der Chromleiste entfernen

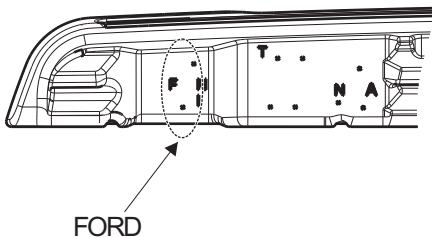
REMARK : 1.) AFTER ADJUST SIDE STEP FOR FORD HOLE THEN
TIGHTEN LOOSE SCREW BETWEEN BRACKET AND SIDE STEP
2.) TIGHTEN SCREW FOR ALL POSITION
3.) FINALLY, PLEASE PEEL CLEAR FILM OFF FROM PVC CHROME STRIP.



8 Nm

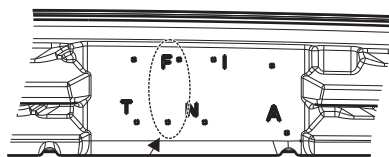
X6
Pro Seite / Per Side

1.1



FORD

1.2



FORD

1.3



FORD